

Impact Report 2025



smarter focus.
brighter tomorrow.

Table of contents

Profile	5
Vision & Strategy	6
Climate Change	10
Circular Economy	12
Own Workforce	14
Societal Impact	16
Divisions	18
Batenburg Energy Technology	20
Batenburg Installation Technology	22
Batenburg Industrial Automation	24
Batenburg Horticulture	26
Batenburg Industrial Components	28
Governance	30

"The need to accelerate sustainability and strengthen our energy supply is growing. Batenburg Techniek is ready to make a difference in this regard. Thanks to close collaboration, we have not only continued building the future of Batenburg Techniek, but have also advanced on our mission: realising a healthy, safe and clean society. *On our way to a brighter tomorrow.*"

Ralph van den Broek, CEO



Foreword

At Batenburg Techniek, we like to look ahead. Technology is evolving rapidly, and within that dynamic environment we see opportunities to create meaningful, lasting impact. Together with our customers, we work every day on smart, future proof solutions that contribute to a climate-neutral society. From making our buildings and vehicle fleet more sustainable to developing energy and automation solutions that make a difference.

We began measuring our emissions and impact in 2019. In recent years, including 2025, we have continued to take important steps forward. We improved the quality and reliability of our data, giving us a clearer understanding of where we stand and where we want to go. And that is exactly what's needed to achieve our goals.

With our reductions in scope 1 and 2 emissions, we are ahead of target. At the same time, we are making progress in circularity, and there is growing attention for sustainable value chain collaboration. Reducing our scope 3 impact is becoming an increasingly natural part of our work.

With this report, we share not only our results but also our ambition. As Batenburgers, we continue to develop and innovate, together with our customers and partners. Because a healthy, safe and clean society is only built together.

Lise Hordijk
Manager Sustainability





Overview Batenburg Techniek

Scope 1 & 2 emissions
In tons CO₂-eq

2025

1620

2024 - 1808



Revenues*

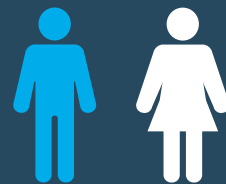
2025

€ 341.6 million

2024 - € 337.2 million

Male/female ratio

86% 14%



Total number of employees

end of 2025

1359

end of 2024 - 1253

Average length
of employment



10 years

WE SUPPORT



Batenburg Techniek is committed
to the [principles of the United Nations
Global Compact](#).



SCIENCE
BASED
TARGETS

DRIVING AMBITIOUS CORPORATE CLIMATE ACTION

APPROVED
NEAR-TERM SCIENCE-BASED TARGETS

* Figures in € millions – continuing and normalised activities

Batenburg Techniek is a technology company with impact. Together with our clients, we work toward a future in which technology contributes to healthy, safe, and clean growth. We research, design, advise and engineer solutions for (complex) industrial automation and energy challenges. Our projects range from developing and implementing software solutions to delivering hardware and carrying out installation, maintenance, and service activities.

Batenburg Energy Solutions

We help clients use energy more efficiently and manage it intelligently. We do this through our expertise in energy solutions: from energy management systems to innovative technologies for renewable energy.

Batenburg Energy Technology

Energy-technological solutions have been at the core of our business for over a hundred years. From energy generation and storage to local grid connections. We supply and develop components and systems for the electricity distribution network, as well as for applications in energy generation, e-mobility, and e-infrastructure.

Batenburg Installation Technology

We design and install directly applicable energy solutions for our customers. For example, for enhancing the sustainability of buildings and the electrification of heavy transport. We combine proven technologies with new developments such as battery storage, thermal solutions, and dynamic load- and power-management systems.

Batenburg Industrial Automation

With our expertise in process automation, we help clients optimise and electrify their industrial processes. This includes design, implementation, and maintenance. In sectors such as industry, water and infrastructure, energy, marine, and offshore, we make processes more efficient, safer, and cleaner. We deliver customised solutions in data intelligence, advise on cybersecurity in operational technology, and develop software for robotics and vision technology.

Batenburg Horticulture

We combine data intelligence with advanced automation. We support growers worldwide with integrated solutions for sustainable food production. In doing so we improve capabilities for cultivating vegetables everywhere in the world, even in the most challenging environments.

Batenburg Industrial Components

Batenburg Industrial Components supports customers in the manufacturing industry with the design and development of smart equipment and solutions. We accelerate innovation by combining engineering, product development, and logistical support.

As a technology partner, Batenburg Techniek plays an important role in the transition to a climate-neutral society. We are convinced that our in-depth knowledge, capabilities, and technical expertise give us a strong position to address the challenges that come with this transition. In doing so, we contribute to a clean, healthy, and safe future.

In the coming years, we see three strategic priorities shaping the strategy and positioning of Batenburg Techniek:

1 Further developing in-depth knowledge, engineering and innovation

- Involved in customers' processes earlier and for longer
- Leading in technology and technological developments

2 Increasing the positive impact of our products and services

- Enabling the energy transition through electrification and automation
- Expanding the energy infrastructure and improving the sustainability of real estate and transport

3 Developing our internal business operations

- Applying new technologies in-house first, to truly understand practical implications
- An internal policy framework that aligns with a sustainable economy
- 'Next Generation': attracting, developing, and encouraging talent

Vision & Strategy





Driving Impact

Sustainability is embedded in our corporate strategy, focusing on four strategic sustainability themes as outlined below.

On our way to a brighter tomorrow
Smarter focus, Brighter tomorrow

Automation & Electrification

Working towards a future with healthy, safe and clean growth

Further developing in-depth knowledge, engineering and innovation

Increasing the positive impact of our products and services

Developing our internal business operations

Climate Change
Applying innovative technologies at customers and in-house.

Circular Economy
Manage resources, material flows and waste responsibly.

Own Workforce
Invest in knowledge, skills and sustainable employability.

Societal Impact
Sharing knowledge and adopting a socially responsible external approach.



The four strategic sustainability themes represent a translation of our ambitions and are partly driven by the material topics identified through our double materiality assessment. With these themes, we aim to effectively address our material impacts, risks, and opportunities (IRO).

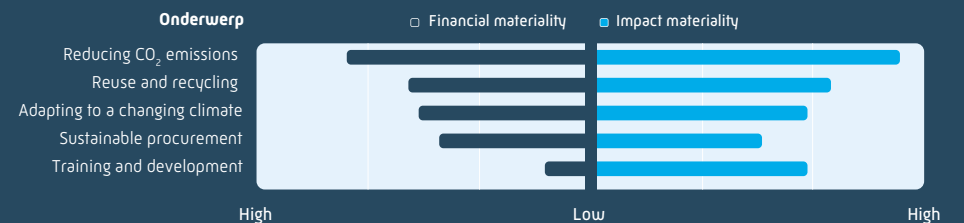
We conducted our first double materiality assessment (DMA) between October 2023 and June 2024. To map the material sustainability topics, we considered our upstream, own operations, and downstream activities. On the next page, these activities are summarised in a value chain. Within our value chain, we distinguish:

- **Upstream:** the procurement and production of resources with a wide range of suppliers. This includes sourcing raw materials or smart components, as well as finished standard and customised products.
- **Own operations:** the services provided by our knowledge-based organisation, with our people at the centre.
- **Downstream:** the work we do for our clients across various sectors, ranging from the delivery of standard products to fully integrated complete solutions.

Based on our initial insights into the value chain, desk research, peer analyses and internal discussions with the operating companies of Batenburg Techniek, we compiled a longlist of potentially relevant topics. These topics served as input for our stakeholder engagement.

The DMA visualisation below shows which (sub)topics were identified as material at that time. Our approach to these topics is described in the chapters covering each of the strategic sustainability themes.

Double materiality matrix

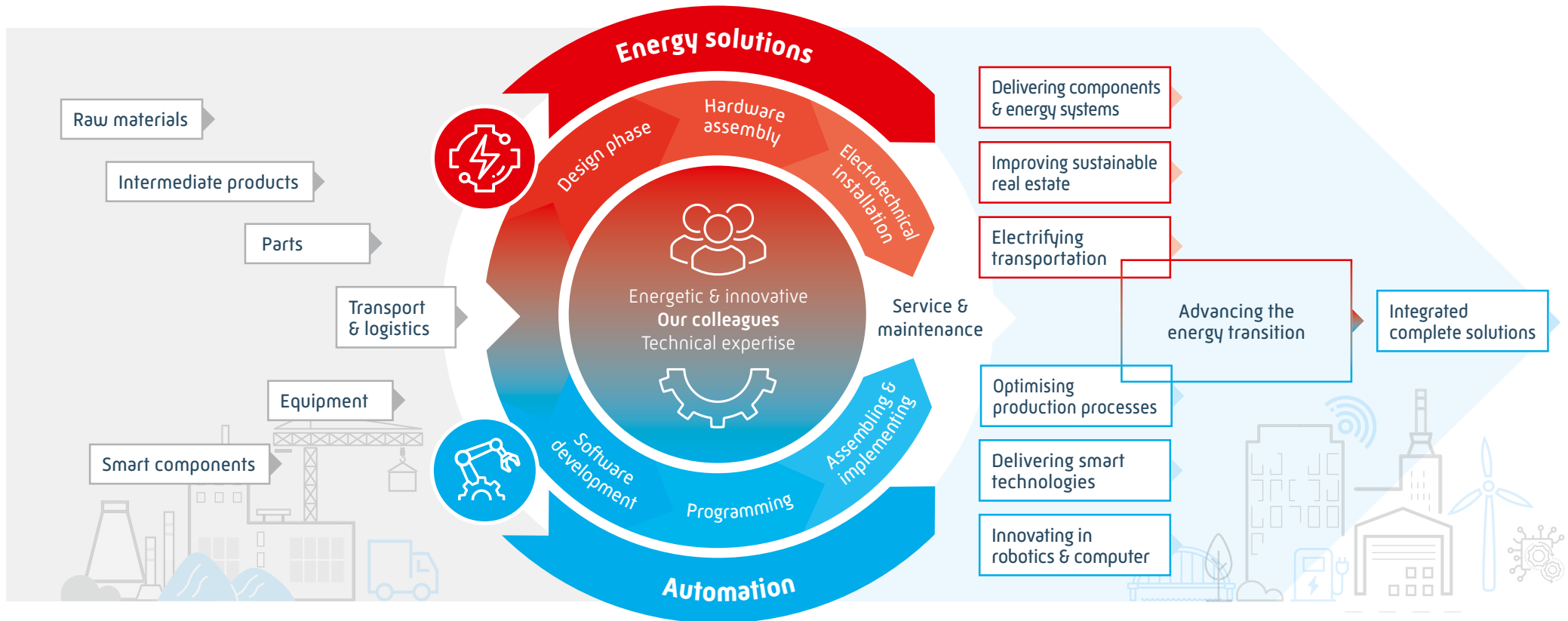


Value chain

Upstream

Own operations

Downstream



Material topics in the value chain

Reducing CO₂ emissions

Adapting to a changing climate

Reuse and recycling

Training and development

Sustainable procurement



climate change

For the theme of climate change, we focus on reducing greenhouse gas emissions and preventing negative environmental impact. Within this theme, we have identified two material topics.

Reducing CO₂ emissions

Our goal is to reduce our CO₂ emissions by 2030 and 2050 in line with the Paris climate agreements ("Paris Proof"). Our 2030 targets have been validated by the Science Based Targets initiative (SBTi) and aligned with the Greenhouse Gas Protocol (GHG Protocol):

- Absolute emission reduction in scope 1 of 55% from the 2019 base year
- Annual procurement of renewable electricity increasing from 0% (2019) to 100% (2030)
- Absolute reduction of combined scope 3 emissions of 25% from the 2022 base year

In addition to our SBTi targets, we consider beyond the value chain mitigation (BVCM) to contribute to climate impact outside of our own value chain as well.

Adapting to a changing climate

Through the projects we deliver for our customers, we optimise processes and reduce emissions. In doing so we focus on the transition to a climate-neutral society.

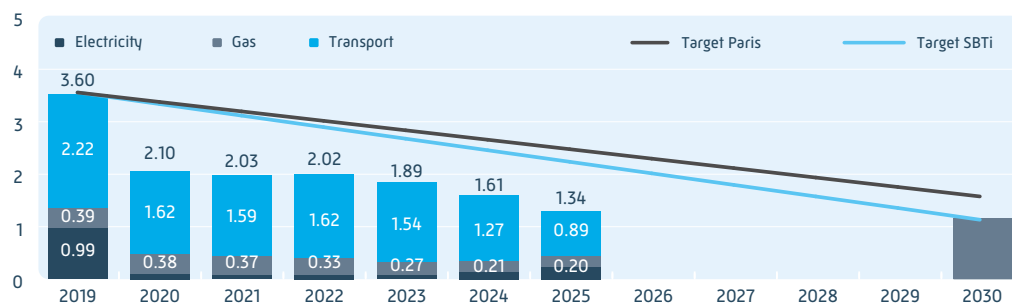
Besides, we increasingly pay attention to our internal adaptation to the consequences of climate change. The management of climate resilience, physical climate risks, and transition risks, forms the foundation of our climate policy towards 2030.

Reflection 2025

In 2025, we worked hard to improve the traceability, verifiability and reliability of our sustainability data. In the years ahead, enhancing data quality will remain a continuous improvement process.

The CO₂ emissions from our buildings and vehicle fleet were further reduced in 2025. There has been a significant increase in the share of electric cars in our fleet (from 44% at the end of 2024 to 62% at the end of 2025). As a result, we are on track to meet our 2030 scope 1 and 2 emission reduction targets, in line with our commitment to the Science Based Targets initiative (SBTi) and the European Union's "Fit for 55" plan. The overview below shows our CO₂ emissions in scopes 1 and 2.

CO₂ per FTE (Scope 1 + 2)



Direct and indirect emissions

Scope 1 (Direct emissions)	2025	2024	Unit	Mutation
Total direct emissions	1326	1656	tCO₂eq	-20%
Fleet (fossil fuels)	1079	1423	tCO ₂ eq	-24%
Fuels (natural gas for heating)	247	233	tCO ₂ eq	6%
Scope 2 (Indirect emissions)				
Total indirect emissions energy	294	152	tCO₂eq	94%
Electricity fleet	209*	73	tCO ₂ eq	187%
Electricity buildings	84	79	tCO ₂ eq	6%
Total tonnes of CO₂eq scope 1 + 2	1620	1808	tCO₂eq	-10%

*Increase in emissions due to electrification of vehicle fleet (from 35% to 52% in 2025)

Partnership Natuurmonumenten



Since 2021, we have been working together with the Achterhoek management unit of Natuurmonumenten on, among other things, the planting of the Batenburg Forest and an orchard at the Hackfort estate. In 2025, a five year partnership agreement was signed between both parties. Through this collaboration, we are actively contributing to nature restoration and the stimulation of biodiversity in this unique area. This partnership also supports beyond the value chain mitigation [BVCM].

Outlook 2026

Following the formalisation of our SBTi targets for 2030, we also formalised our long term emission reduction targets at the beginning of 2026. Our goal is to be climate neutral by 2050. As a continuation on the transition pathway, we will further specify our route towards these goals. In 2026, we will therefore work on a more detailed elaboration of our transition plan towards 2050.

At Batenburg Techniek, scope 3 emissions far exceed those of scopes 1 and 2. Category 3.1 (purchased goods and services) and 3.11 (use of sold products) represent the largest share within scope 3, with category 3.1 being the area where we can exercise the most direct influence. The focus of the actions, some of which have already started, to reduce emissions in this category will firstly lie with Batenburg Energy Solutions, mainly because of the large amount of materials being procured there.



Circular Economy

Within the theme of the circular economy, we focus on reuse and recycling. In other words, the conscious management of material flows and waste. We apply this specifically to the material outflows of our products and services, as well as to waste management.

Material Outflows

Our approach to material outflows means designing our products and services in a way that places reuse and recycling at the forefront, with an increasingly larger share of secondary [recycled] materials.

Waste Management

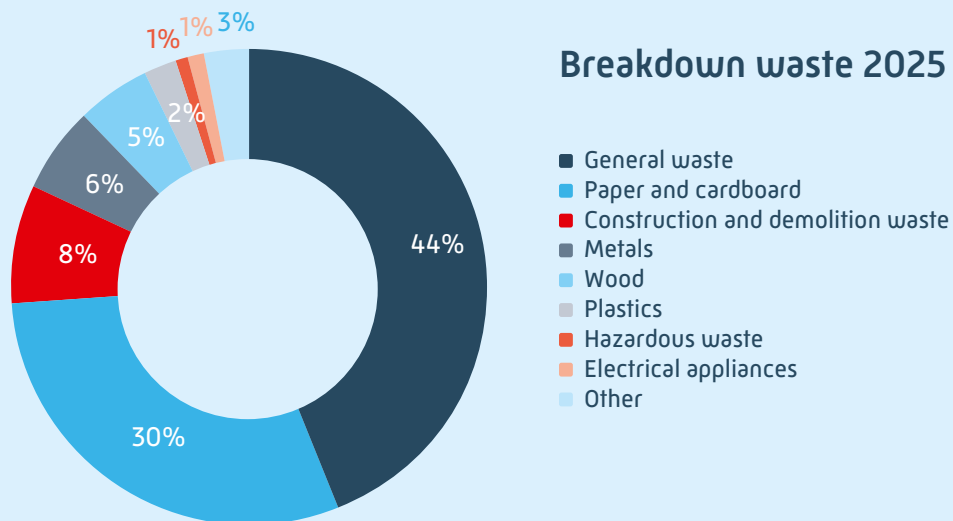
We focus on reducing waste from our own operations and ensuring proper separation and disposal. Although waste represents a relatively small environmental impact for Batenburg Techniek, it is a visible element of our sustainability policy. For that reason, despite its limited impact, it remains an important point of attention within circularity.

Reflection 2025

In 2025, we determined which product groups are most important in the context of circularity. Within the automation companies, relatively few physical products are traded. Therefore, our focus is primarily on the companies within Batenburg Energy Solutions. Within this unit, product groups were selected that are either sold in large quantities or contain significant material components.

Key aspects that play a role in circular products include long product lifespan, repairability, and reduced use of primary abiotic materials. Due to their application in the energy grid, nearly all selected product groups are designed for very long lifespans and a high level of product safety. As a first step, we are therefore focusing on increasing the share of secondary materials in these products. Close cooperation within the value chain is essential in this process. Over the past year, we held discussions for several products with both suppliers and customers regarding material composition.

With respect to our waste management, we reduced waste volumes from 272 tonnes in 2024 to 258 tonnes in 2025, a reduction of 6%. We also worked on reducing the number of waste processing partners. As a result, insight into the various waste streams has improved, as shown in the accompanying visual.



To be able to share knowledge and experiences with other market players, Batenburg Techniek has joined the Circularity and Sustainability Policy Committee of the industry association *Techniek Nederland*. Together with eight other participating sector peers, we explore opportunities to apply circular principles in daily practice.

Outlook 2026

Analyses of our key product groups within the circularity theme show that a large share of our sourcing comes from a relatively small group of suppliers. In 2026, we will continue working with these suppliers to further map the material composition of these products.

In addition, we aim to create greater insight into the different processing route, and therefore the circularity, of our waste streams. This will give more clarity on the possibilities for optimising waste management.



Own Workforce

Our employees make the difference. They are therefore central to Batenburg Techniek.

Our focus on Automation and Energy Solutions requires a learning organisation. We closely follow new technological developments and the changing needs of clients and end users. As a knowledge intensive organisation, we continuously invest in the training and development of our people.

To ensure the sustainable employability of our employees, we have structured our people policy around four themes: learning & development, safety & well being, diversity & inclusion, and attracting & retaining talent. Our Batenburg concepts give practical form to these themes. These concepts are: B | Smart, B | Safe, B | Fit, B | Happy, and B | Welcome.

Reflection 2025

Through our B | Smart programme, we offer our colleagues extensive development opportunities via the Batenburg Academy. In 2025, various training programmes took place, in which employees from different disciplines participated. In addition, our online learning platform was launched, offering a wide range of e-learning modules and digital learning resources.

Under B | Safe, we focus on physical and social safety. In 2025, we facilitated training sessions for managers, delivered in collaboration with the Dutch Compliance Institute (NCI), about guaranteeing a safe and inclusive working environment.

At Batenburg Techniek, everyone has equal opportunities, is treated equally, and mutual respect is actively promoted. As part of the Dutch diversity act, we defined the following male-female balance targets in 2022: Supervisory Board 60–40%, Executive Board 50–50%, and upper management 75–25%. In 2025, we met these targets for both the Supervisory Board and upper management. For the Executive Board, the ratio was 66–33% (male–female), which will return to 50–50% in the course of 2026.

The total number of employees is 1,359, of whom 14.4% are women (196 of 1,359). In 2025, we increased our focus on diversity and inclusion, for example through group workshops and targeted employer branding efforts. In line with that we also introduced our B | Welcome concept, to show we are a company where talented people from all backgrounds feel welcome.

Every year, we conduct an employee satisfaction survey under the concept B | Happy. In 2025, this resulted in an e-NPS score of 56, while the e-NPS in the Netherlands and knowledge intensive organisations averaged 50. This indicated that our employees above average recommend Batenburg Techniek as an employer. The improvement points identified in the survey form the basis for local action plans to enhance the employee experience and overall well-being.

Batenburg Family Festival



In line with B | Fit, we offer both local initiatives and collective activities, such as the Batenburg Family Festival held in September 2025, focused on (mental) health. In collaboration with Natuurmonumenten, we organised various workshops as well as a walking and cycling tour for the whole family.

Outlook 2026

In 2026, we will continue to focus on developing the knowledge and skills of our employees. For the newly launched online learning platform, our aim is to provide access to an even larger number of colleagues.

Through targeted programmes, we offer perspective and challenge to our employees, we foster long term engagement with the organisation, and we focus both on their knowledge and competences. We will therefore also introduce traineeships that enable internal exploration across different disciplines.

Batenburg Techniek aims to stay closely connected to, and to improve our impact on, the environment in which we operate. By sharing knowledge and adopting socially responsible external practices, we contribute to a just transition toward a climate-neutral society.

Societal impact is a broad concept. This is why we focus our efforts on three key areas.

Next Generation

We work together with educational institutions and knowledge intensive organisations. In doing so, we share our internal expertise with various target groups and help stimulate knowledge development in technology. We ensure that current and future employees of all ages can find the right place within our organisation and are being well prepared for future challenges, taking into account their work experience and education.

Sustainable Procurement

The principles and values that Batenburg Techniek applies when making business decisions also reflect how we see our role in society. Conscious purchasing of goods and services, considering the impact of our actions on the environment and living conditions, is an important part of this. We therefore aim to make sustainable procurement an integral part of our upstream value chain.

Social Engagement

Our locations are actively involved in local communities, and support and/or participate in a wide range of charitable causes and initiatives.



Societal Impact

Reflection 2025

In 2025, we again paid significant attention to development of and inflow into the technology sector. Our colleagues delivered guest lectures at vocational (MBO), applied sciences (HBO), academic (WO) and technical practical studies. In addition, we took part in open company days, sponsored study associations, and collaborated with municipalities and primary schools. We also worked on welcoming a greater share of women into the technology field, partly through our collaboration with VHTO, an expertise centre committed to increasing the participation of (young) women in STEM and IT.

In 2025, we initiated internal working sessions with our colleagues on the sustainable procurement of goods and services. During these sessions, we discussed the newly developed Supplier Code of Conduct, which sets standards for the conditions under which products and services may be offered or produced. The Code covers three topics: treatment of people, care for the environment and responsible business conduct.

Locally, we supported various causes. One example is Batenburg Installation Technology's contribution to the Stadionloop, a 600-kilometre route along all 18 Dutch Eredivisie football stadiums. The goal was to raise funds for developing 50 well-equipped spaces for people with disabilities at the Go Ahead Eagles stadium. At the same time, the Stadionloop supports the medical missions of Rotaplast Netherlands, which helps children worldwide with cleft lip/palate and severe burns to build a new future. Another example is the sponsoring by Batenburg Digit of the annual carpentry weeks for children in West-Friesland.

Next Generation



We are proud to contribute to the combination of sustainable technology, innovation, and young talent. That is why Batenburg Techniek became a sponsor of the Dutch SuMoth team this year. This motivated group of students, affiliated with TU Delft, is designing and building a foiling sailboat: the Sustainable Moth. A foiling sailboat rises above the water surface once it reaches a certain speed, reducing drag significantly. With their boat, the students will participate at the end of the next school year in the international SuMoth Challenge at Lake Garda in Italy, where not only speed counts but also design, material use, and innovative strength.

Outlook 2026

We will continue the sustainable procurement working sessions in the first half of 2026. With that our aim is to roll out the Supplier Code of Conduct in 2026 and to actively discuss its content with our key suppliers.

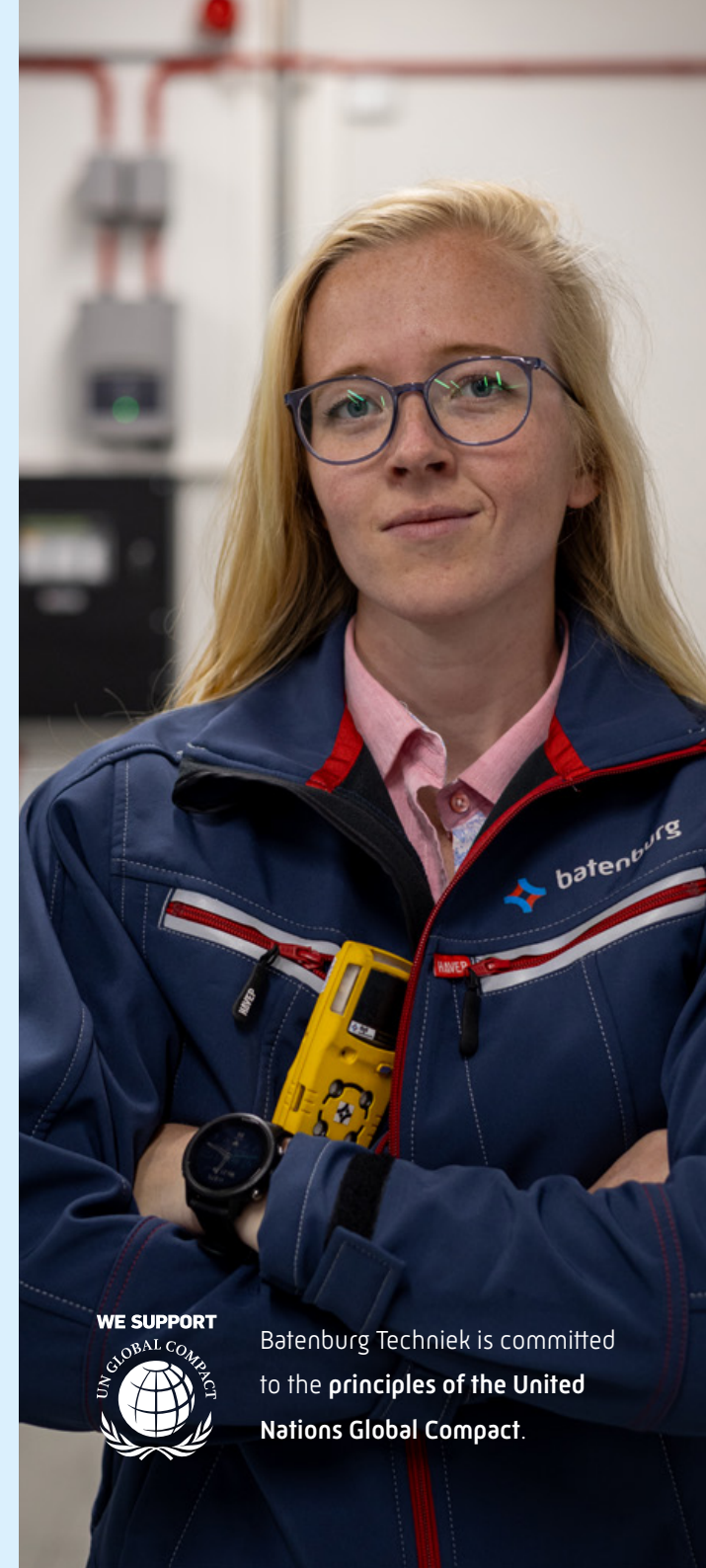
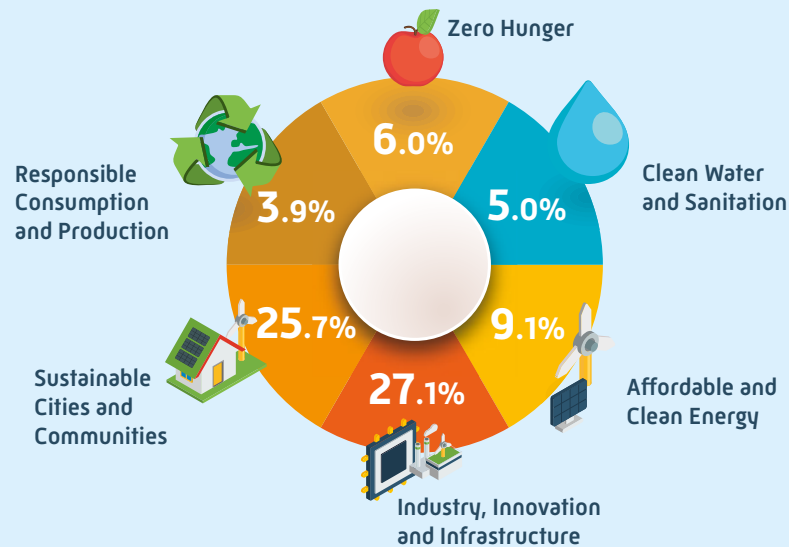
Through the expertise centre VHTO, which is committed to increasing the participation of (young) women in beta, technology and IT, Batenburg Techniek will take part in Girls' Day in 2026. On this day, several of our locations will open their doors to introduce girls from a local school to the various facets of the profession.

Positive impact projects

With our work across the divisions, we create the greatest impact in the transition to a climate-neutral society. We expand the energy infrastructure and make buildings more sustainable, thereby enabling the energy transition. We do this through the development of charging hubs, the installation of sustainable energy sources, storage and monitoring solutions. In addition, we develop and implement automation solutions that contribute to more efficient, safer, and more sustainable processes. In doing so, we help companies and organisations in the industrial, water, and infrastructure sectors adapt to a changing climate and prepare for a future with healthy, safe, and clean growth. Projects that contribute to this are referred to as positive impact projects.

We currently classify our projects using the United Nations Sustainable Development Goals (SDGs). When a project contributes positively to one or more of these SDGs, we classify the associated revenue as having a positive (sustainable) impact. The share of revenue from these projects relative to total revenue determines our positive impact score. In 2019, 46% of our projects had a positive impact. In 2025, this had increased to 77%. Through our active membership of the UN Global Compact Network Netherlands, we endorse not only the SDGs but also the Ten Principles on human rights, labour, the environment, and anti corruption.

Impact Projects per SDG in 2025



Batenburg Techniek is committed to the principles of the United Nations Global Compact.

Divisions

Batenburg Techniek employs more than thirteen hundred people across two domains: 'Automation and Energy Solutions'. From these two themes, we operate through five divisions: Batenburg Energy Solutions, consisting of Batenburg Energy Technology and Batenburg Installation Technology, alongside Batenburg Industrial Automation, Batenburg Horticulture, and Batenburg Industrial Components.

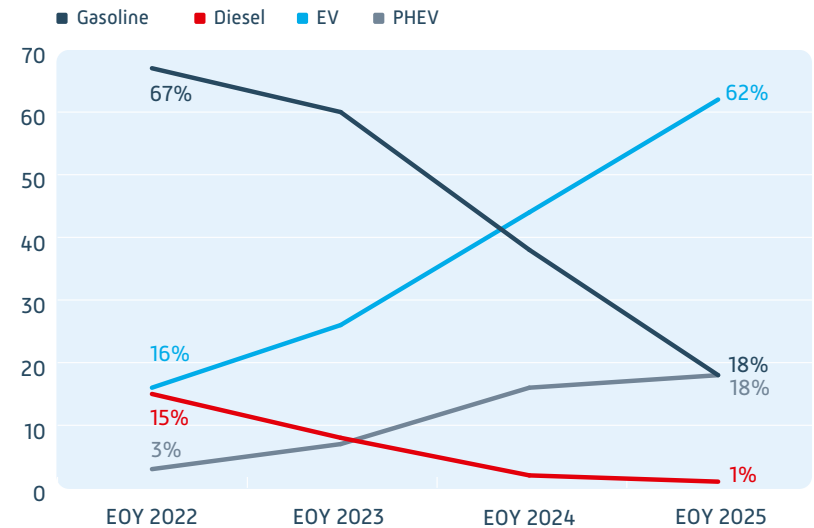
At the Batenburg Techniek level, we define and manage towards the sustainability strategy and set targets across the various themes. These are translated into non-financial performance indicators at the level of the operating companies. To support measurement, we also look to align with management and safety systems such as ISO 9001, ISO 14001, ISO 27001, and VCA.

In many areas the divisions have their own professionals, while overarching policies are facilitated by Batenburg Techniek. Since 2021, Batenburg Facilitair's central IT organisation has been certified according to ISO 27001. Given the increasing importance of cyber security, we are working on organizational wide certification. In 2025 important steps have been taken to realise this. In addition, in 2025 our central IT department donated hundreds of IT hardware products, with the proceeds going to support KiKa.

As the overarching organisation, Batenburg Techniek is committed to EcoVadis, an external assessment of our sustainability performance in the areas of Environment, Labour & Human Rights, Ethics, and Sustainable Procurement. We are currently undergoing reassessment of our score. Additionally, we use our validated SBTi targets as a framework. Through our internal mobility policy, we have defined the goal to electrify our entire vehicle fleet.

In addition to the work carried out within the individual divisions, we increasingly collaborate across divisions. One example is the modular data platform Batenburg Nexus, launched in 2025, which combines Artificial Intelligence and Machine Learning techniques. The technology behind this platform also forms the basis of the Batenburg Energy Management System applied within Batenburg Energy Solutions. With these smart tools developed in-house, we can respond quickly and effectively to the complex challenges faced by our clients.

Passenger cars – fuels (2025)



Quality & Certifications



Quality assurance has been a priority at Batenburg Energy Technology for decades. We view quality as a contribution to better continuity and improved products for our customers and suppliers. This commitment also extends to our employees and to society, which is reflected in our PSO certificate, something we are proud of.

Our certificates:

ISO9001:2015

ISO14001:2015

CO₂ Performance Ladder | Level 5

PSO Certificate | Step 2

VCA** Certificate

Cembre certified maintenance and calibration workshop

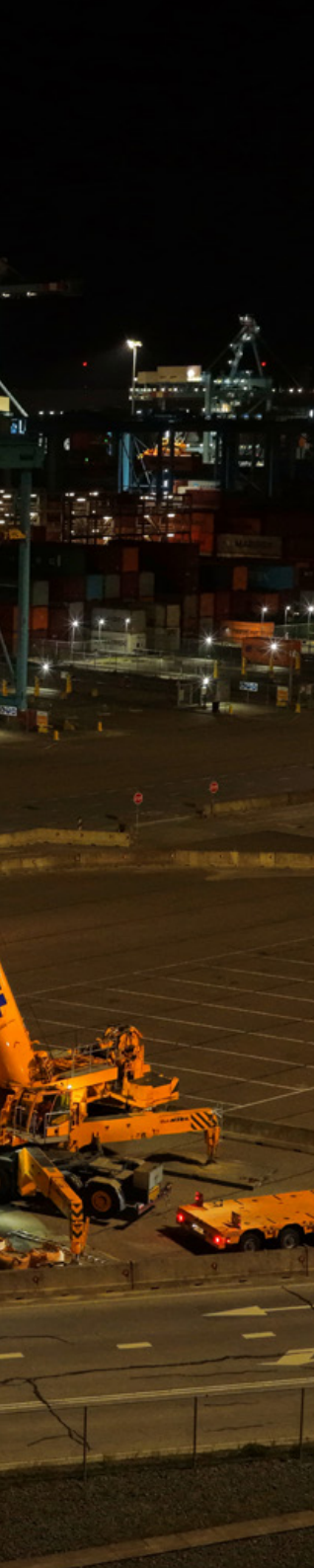
Product Certificate SPC00117 – ProRail

EcoVadis, through Batenburg Techniek

Batenburg Energy Technology

New Transformer and Medium voltage Switchgear Accelerate Electrification at APM Terminals Maasvlakte II

APM Terminals Maasvlakte II (APMT MVII) is one of the world's most advanced fully automated container terminals, located in the Port of Rotterdam. The terminal is a frontrunner in electrification and aims to become an emission free terminal. To strengthen the energy infrastructure, Batenburg Techniek is supplying and installing an oil cooled transformer and medium voltage switchgear. The medium voltage switchgear forms the heart of the electrical infrastructure. The system is connected to APM Terminals' SCADA system, enabling remote control and monitoring. The transformer makes it possible to provide more electrical capacity to support the terminal's growth and the further electrification of its logistics processes. Combined, these installations increase the available power and feed, among other things, the (new) quay cranes and the Battery Exchange Station. This automated station is used to swap batteries for electric, unmanned vehicles and is part of a sustainable and fully automated operation. In this way, we contribute to improving the reliability and future readiness of the energy supply within the port, helping to realise fully emission free operations.



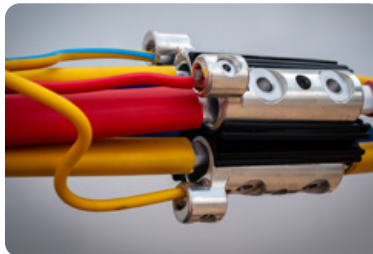
As part of Batenburg Energy Solutions, Batenburg Energy Technology develops and supplies components and systems used in the electricity distribution network. These include standard products such as cable accessories, connectors and tools, as well as transformer stations and innovative solutions.

Environment

The greatest impact Batenburg Energy Technology can have on making the Netherlands more sustainable lies in enabling the energy transition as quickly and effectively as possible. This requires not only innovation and motivated colleagues, but also a significant amount of products. We have outlined the ambition to increase the share of renewable or recycled materials with lower greenhouse gas emissions, without compromising product safety or lifespan. Achieving this requires close cooperation with our customers and suppliers. A good example of this is the new branch connection block.

New Branch Connection Block

Last year, we introduced a new branch connection block designed to resolve electricity grid failures faster, more safely and with less material. This innovation reduces material use per repair by 30%, contains 40% recycled material, and is designed to be 100% recyclable.



Social Engagement

Because knowledge sharing and preservation are key focus areas, our certified and authorised colleagues regularly provide external training and education. Batenburg Energy Technology is also committed to helping people with a distance to the labour market find and retain employment. This form of social employer responsibility is recognised with a PSO certificate. Together with the broader sector, we are also taking concrete steps toward a more inclusive future. For example, by focusing on more women in technology through supporting and facilitating the 'Techniek Inclusief' initiative. This series of events focuses on attracting and retaining women in the technical sector and is organised by 'Aanvalsplan Bouw, Energie & Techniek', with VHTO and Techniek Nederland as knowledge partners.

Our People

We believe it is important that our colleagues enjoy going to work and can do so safely and in good health. In that light, employees were offered a nutrition workshop and a health check under the concept of B | Fit. Sessions with the confidential counsellor were organised to address social safety, and staff could attend a training course on time management aimed at reducing stress. We also ensure that employees are actively involved in business and decision making processes through quarterly staff meetings. These meetings create space for dialogue about ongoing work and developments, and provide an opportunity to celebrate successes.

Quality & Certifications

Batenburg Installation Technology continuously works to improve quality and safety. With our many years of experience, we know that customers care not only about the quality of the final product, but also about how the preparation and execution processes are carried out.

To ensure consistent quality, we have chosen a number of company certifications that are externally audited each year. These certificates are issued at either divisional or site level.

Our certificates:

VCA**	applicable to the entire division
ISO9001	applicable to the entire division
ISO14001	applicable to the entire division
ISO27001	applicable to the Rotterdam and Waalwijk sites
BRL6000 02 03	applicable to the Rotterdam, Twello/Nijkerk and Nijmegen sites
BRL6000 08	applicable to the Twello/Nijkerk site
BRL100	applicable to the Schiedam and Twello/Nijkerk sites
BRL6000 21	applicable to the Schiedam site
BRL6000 25	applicable to the Twello, Nijkerk and Schiedam sites
BORG E	applicable to the Nijmegen and Twello/Nijkerk sites
BMI	applicable to the Nijmegen and Twello/Nijkerk sites
SCIOS SCOPE 1 and 7A	applicable to the Schiedam site
SCIOS SCOPE 1, 8, 10	applicable to the Twello/Nijkerk site
SCIOS SCOPE 12	applicable to the Twello site
EcoVadis	through Batenburg Techniek

Batenburg Installation Technology



Batenburg as a Strategic Partner Working on the Electrification of Renewi's Truck Fleet

Renewi and Batenburg Techniek launched a strategic partnership in 2025 to support the electrification of Renewi's truck fleet. Renewi aims to operate a safe, scalable, and low carbon business by 2030. To help achieve this, Batenburg Techniek is delivering grid reinforcement and charging hubs at multiple sites. The first charging hub in Wateringen (18 charging points) is already operational, with Amsterdam and Amersfoort soon to follow. Strengthening the energy infrastructure is essential to enabling charging capacity for more than 30 electric trucks.

Our expertise in charging infrastructure has not gone unnoticed: last year, three of our projects were nominated for the Logistics Charging Hub Award 2025. All three are strong examples of smart engineering and reliable execution in the transition to zero emission transport.



As part of Batenburg Energy Solutions, Batenburg Installation Technology is active in energy technology, industry, logistics and utilities construction. With a focus on designing and installing directly applicable energy solutions, Batenburg Installation Technology supports companies in making real estate more sustainable and electrifying heavy transport.

Environment

Throughout the work preparation, implementation and completion of solutions for our customers, we place great emphasis on minimising the impact on people and the environment. Sustainable design, with high energy efficiency and reduced use of primary raw materials, is central to this effort. We also continue to develop our tailored solutions to realise CO₂ reductions for our customers.

Environmental impact is addressed not only in customer projects, but also at our own Batenburg Installation Technology sites. Smart Solar Parking, an innovative carport that combines solar power generation with advanced storage technology, is one example of this. Through our long standing ISO14001 certification, we have structurally embedded environmental management systems within the organisation.



Social Engagement

We also strongly focus on social responsibility and supporting various (local) initiatives. These include promoting technology among young people, collaborating with schools, and sponsoring local sports clubs. One example is the cooperation with the municipality and primary schools through participation in 'De Techniekdag Voorst'. We also actively promote social and inclusive employment. For years, we have been supervising interns and vocational students (BBL) from MBO levels 2 through 4. In addition, we consciously source from PSO-certified companies, such as Technische Unie.

Our People

The safety and well-being of our employees is something we obviously take very seriously. This is reflected each year during B | Safe Day, a day dedicated to knowledge-sharing, practical experience and inspiration focused on safety and vitality. In 2025, the event was held in the iconic halls of De Kuip stadium, where we jointly explored the theme 'safety in the workplace'. Both physical and mental safety were addressed. Through practical workshops, open conversations and concrete tools, we not only gained knowledge but also strengthened our collective approach. The day underscores that safety is not a one-time action, but a shared, daily responsibility.

Quality & Certifications



The long term success of Batenburg Industrial Automation depends in part on the ability to continuously improve the quality of our services, with a focus on safety, quality, and the environment. The emphasis must be on safeguarding the health of our people, ensuring operational safety, and driving quality improvements. This approach is in the best interest of our customers, employees, and suppliers.

Our certificates:

ISO9001

applicable to Batenburg IAS, JB Systems, Magion, Beenen, Bellt applicable to Batenburg Beenen applicable to Batenburg Bellt, Magion and IAS and as of 2026 to Batenburg Digit, Beenen and JB Systems

ISO14001

ISO27001

VCA*

certificate applicable to Batenburg Magion and Bellt certificate applicable to Batenburg Digit and Beenen

VCA**

PSO Certificate | Step 2

CO₂ Performance Ladder | Level 3

applicable to Batenburg Digit and Digit applicable to Batenburg Beenen and Digit

Safety Culture Ladder | Step 3

EcoVadis

applicable to Batenburg Beenen through Batenburg Techniek

Batenburg Industrial Automation

Smart response to energy prices: Avebe takes the next step with an intelligent e-boiler

At Royal Avebe in Foxhol, Batenburg Techniek has installed an innovative e-boiler that produces steam based on real time electricity prices. Unlike standard e-boiler installations, Avebe chose to fully integrate the control system into its existing DCS environment. This gives the company maximum flexibility: adjustments can be made easily, and fine tuning can be carried out in-house. In this way, Avebe can take full advantage of favourable energy prices, which is both cost saving and sustainable. In addition, the installation contributes to a more stable regional electricity grid. With the e-boiler, Avebe takes an important step towards more efficient and sustainable production. A strong example of how smart technology can support a future proof industry.



The Batenburg Industrial Automation division focuses on designing and managing control systems for applications in industry, water & infrastructure, and offshore. As a system integrator, we deliver customised, client-specific solutions. With our expertise in production processes, algorithms, data intelligence and operational technology, we make processes more efficient, safer and cleaner.

Environment

Batenburg Industrial Automation aims to increasingly apply its expertise in areas such as energy monitoring, OEE, machine safety, explosion safety, vertical integration and cybersecurity in consulting projects related to smarter, safer and more sustainable production.

Internally, important steps have also been taken. In 2025, Batenburg JB Systems moved into a new, more sustainable rental building with an A++ Energy Label and a BREEAM In-Use Very Good certificate. This is a strong follow-up to earlier sustainable improvements at Batenburg Beenen and Batenburg Digit, where the buildings were future-proofed with a new climate control system, building management system, charging stations and solar panels. As a result, these locations have been made gas-free in the last few years.

Social Engagement

Locally, the various sites of Batenburg Industrial Automation are active through knowledge-sharing and participation in a wide range of initiatives. For example, Batenburg JB Systems took part in the "Cycling for Sophia" event, where employees took part in a spinning marathon to raise money for the Erasmus MC Sophia Children's Hospital. Colleagues from Batenburg Beenen regularly visited events and educational institutions to exchange knowledge about smart industry, cybersecurity and data intelligence. This keeps us abreast of the latest developments and with the next generation of engineers.



Our People

Division-wide, Batenburg Industrial Automation employs the largest number of people within Batenburg Techniek. We believe in the agility, creativity and ambition of our people and in their ability to get the best out of themselves, each other and technical possibilities.

B | Safe also remains a priority. Our focus lies not only on physical safety, but also on social safety and cybersecurity. Batenburg Beenen has achieved Safety Culture Ladder (SCL) Step 3 certification, and we are working toward certifying the entire division to ISO 27001. This demonstrates that safety is firmly embedded in our culture.

Quality & Certifications



Batenburg Horticulture is committed to maintaining the highest standards of data protection and security. Our IIVO system is equipped with 24/7 backup functionality to ensure that your data is always safe with us.

The internationally recognised standards listed below confirm that our management system meets all information security requirements, safeguarding the confidentiality, integrity, continuity and availability of information within our organisation.

Our certificates:

ISO27001

ISO9001

BRL8001 (HortiQ)

EcoVadis Bronze



EcoVadis Bronze Medal

Through Batenburg Techniek, we are committed to EcoVadis, which applies to all divisions. Due to specific sector requirements, Hoogendoorn has obtained an additional, separate certificate.

Hoogendoorn Growth Management has been awarded a bronze EcoVadis medal, recognising their high standards in the area of sustainability management.

Batenburg Horticulture



From Intuition to Intelligence: Finka's Journey with IIVO and Intelligent Algorithms

Finka, a leading tomato grower in Querétaro, Mexico, is known for its focus on innovation and sustainability. At its 21.6-hectare San Antonio site, the company introduced our IIVO climate computer in 2020 to optimise greenhouse climate conditions and resource use. One year later, they added our Intelligent Algorithms functionality, which proactively adjusts greenhouse conditions to achieve even greater precision and automation.

This technological step has led to clear, measurable results. By combining IIVO's advanced climate control with the Intelligent Algorithms functionality, Finka achieved over the past years: 18.5% higher production, 19% reduction in fertilizer use, 22% energy savings and 14.5% reduction in water use. At the same time, the crop remained uniform and of high quality. According to Finka, IIVO has transformed their cultivation approach: decisions that were previously made based on intuition are now driven by data analysis. This enables far more efficient use of resources.



With integrated automation solutions and data intelligence, Batenburg Horticulture enables horticultural businesses worldwide to optimise their cultivation processes. Batenburg Horticulture operates in the market under the brand names Hoogendoorn Growth Management and LetsGrow.com.

Environment

With smart climate computers and software, LetsGrow.com and Hoogendoorn Growth Management provide solutions that enable growers to produce more efficiently and sustainably. Energy efficiency is a key element in this. Hoogendoorn Growth Management firmly believes that a high-tech agriculture and horticulture sector is essential to a future in which both people and the planet can thrive. This is why we are an initiator of the manifesto “De Eerste Duurzame Generatie” (“The First Sustainable Generation”), which emphasises that technology is not a goal in itself but a means to achieve sustainable growth.



Batenburg Horticulture also participates in “100% Groen Geteeld” (“100% Green Grown”). This initiative by Dutch growers’ associations focuses on sustainable crop protection by combining biological and technological innovations with environmentally friendly crop protection methods. The aim is to reduce dependence on chemical agents.

Social Engagement

There is strong focus on the technological development of the sector. Wageningen University & Research (WUR) and Hoogendoorn Growth Management have been working closely together since 1993 to help shape the future of horticulture. Our technology supports WUR in managing the climate in their greenhouse departments, where the IIVO system is used.

The collaboration also extends further through LetsGrow.com, which was originally founded as a WUR initiative. Through LetsGrow.com, we contribute to the development of the HortiFootprint Category Rules (HFCR); technical guidelines for the horticultural sector for carrying out Life Cycle Assessment (LCA) research for horticultural products.

Our People

Employees also take center stage at Batenburg Horticulture. As part of B | Fit, Hoogendoorn dedicates extra attention to health and well-being during the annual Vitality Week. Colleagues kicked off the week with a healthy smoothie, got moving during an energetic bootcamp session and even enjoyed a cycling activity. Outside of this week, we continue to encourage an active lifestyle through initiatives such as padel, football, boxing and cycling.

Quality & Certifications

At Batenburg Industrial Components, we strive for continuous improvement and ensure a consistently high level of service.

Our certificates:

ISO9001	Batenburg Applied Technologies
ISO14001	Batenburg Fastening Technology
ISO9001	Batenburg Fastening Technology
ISO9227 NSS	Batenburg Fastening Technology performs testing according to this standard
EcoVadis	through Batenburg Techniek

With the quality laboratory of Batenburg Fastening Technology and our in-depth expertise, we provide not only products but a Iso assurance. We carefully inspect and validate our products to meet your requirements and expectations, supported by full lot traceability.



Batenburg Industrial Components

Fastening Technology for Unique Solar Panel Mounting Systems

The collaboration with RABLE, a producer of innovative lightweight mounting systems for solar panels, aligns perfectly with our ambition to make sustainable solutions practical and scalable. For this unique system, we supply high-quality fastening materials that ensure safe, efficient and fast installation. By combining our expertise with RABLE's smart designs, we create a complete solution that stands out in quality and reliability. In the coming year, we will take an important next step: we will install this system at one of our own office locations. In doing so, we not only demonstrate our confidence in the product, but also show that we actively apply sustainability within our own organisation.



The companies within the Batenburg Industrial Components division focus on the manufacturing industry. The division consists of Batenburg Applied Technologies and Batenburg Fastening Technology. Through engineering, product design and logistical support, the organisations bridge the gap between customer needs and the latest technologies in the market. In this way, smart devices become even smarter, helping customers move confidently towards the future.

Environment

In its warehouse, Batenburg Fastening Technology uses the Modula Green storage system, an automated vertical warehouse system that saves energy by converting the downward motion of its lift into electricity, which is fed back into the grid. This results in energy savings of up to 30%. Efficient and optimised stock management goes beyond warehouse layout: attention is also given to reducing packaging materials, especially plastics. Wherever possible, the plastic packaging we use is made from biobased materials.

Bright Bin Update

In 2025, the Bright Bin, a further development of our own innovative logistics system, received an upgrade. This ship-to-line system offers significant savings in production processes by optimising inventory management and replenishment. The latest version was developed in collaboration with Batenburg Applied Technologies for the hardware) and Batenburg Bellt for the software. The system already enabled efficient inventory management, but the upgrade has further improved performance: there is no longer a need for production stops, no surplus stock or waste, and unnecessary inventory costs are avoided.



Social Engagement

Batenburg Industrial Components is mindful of its impact on society. We work with social partners to involve people with a distance to the labor market in our operations. The annual Christmas package at Batenburg Fastening Technology is deliberately sourced from a care farm and contains local products.

Batenburg Applied Technologies is an active partner of Hi Delta, playing an important role in connecting manufacturing companies, suppliers, knowledge institutions, educators and government bodies in the technology sector in South Holland. In addition, Batenburg Applied Technologies is committed to social and inclusive employment, supporting interns, vocational (BOL) students and work-and-learn (BBL) students from MBO levels 2 to 4.

Our People

Locally, employee well-being and vitality are encouraged through various initiatives. At Batenburg Applied Technologies, among other things, padel tournaments are organised and employees are actively involved in decision-making and business operations through regular meetings. At Batenburg Fastening Technology, each employee receives a dedicated vitality budget, and in 2025 both a nutrition and vitality expert as well as an integrity and conduct specialist provided training sessions.

Policy and Management

We integrate environmental, social and governance (ESG) factors into our strategy, objectives and decision-making processes. The Supervisory Board, Executive Board and management board periodically assess the impact of the strategy, the risk framework and the progress on the objectives. In doing so, they ensure that these objectives align with the long-term interests of both the company and its stakeholders. This enables Batenburg Techniek to ensure that strategic choices, investments and risk-management measures contribute to long-term sustainable value creation.

Within Batenburg Techniek, we distinguish ourselves through a transparent culture with innovative and energetic being our core values. We attach great importance to openness, clear communication and a pleasant working environment. We work with a Code of Conduct & Reporting Procedure and an ICT Code of Conduct, and employees are periodically reminded of these guidelines. Irregularities can also be reported externally to the Dutch Whistleblowers Authority.

Sustainable Development

As early as 2019, we began measuring relevant key figures such as CO₂ emissions per FTE, the percentage of projects with positive environmental impact, and several social and governance-related values and indicators. In anticipation of the Corporate Sustainability Reporting Directive (CSRD), we strengthened our sustainability approach from 2023 onwards. By conducting a double materiality analysis and extensive data collection, we created stronger focus on the material topics. For our sustainability statement, we already largely apply the CSRD framework, with the expectation that we will be required to report under CSRD within the next five years.

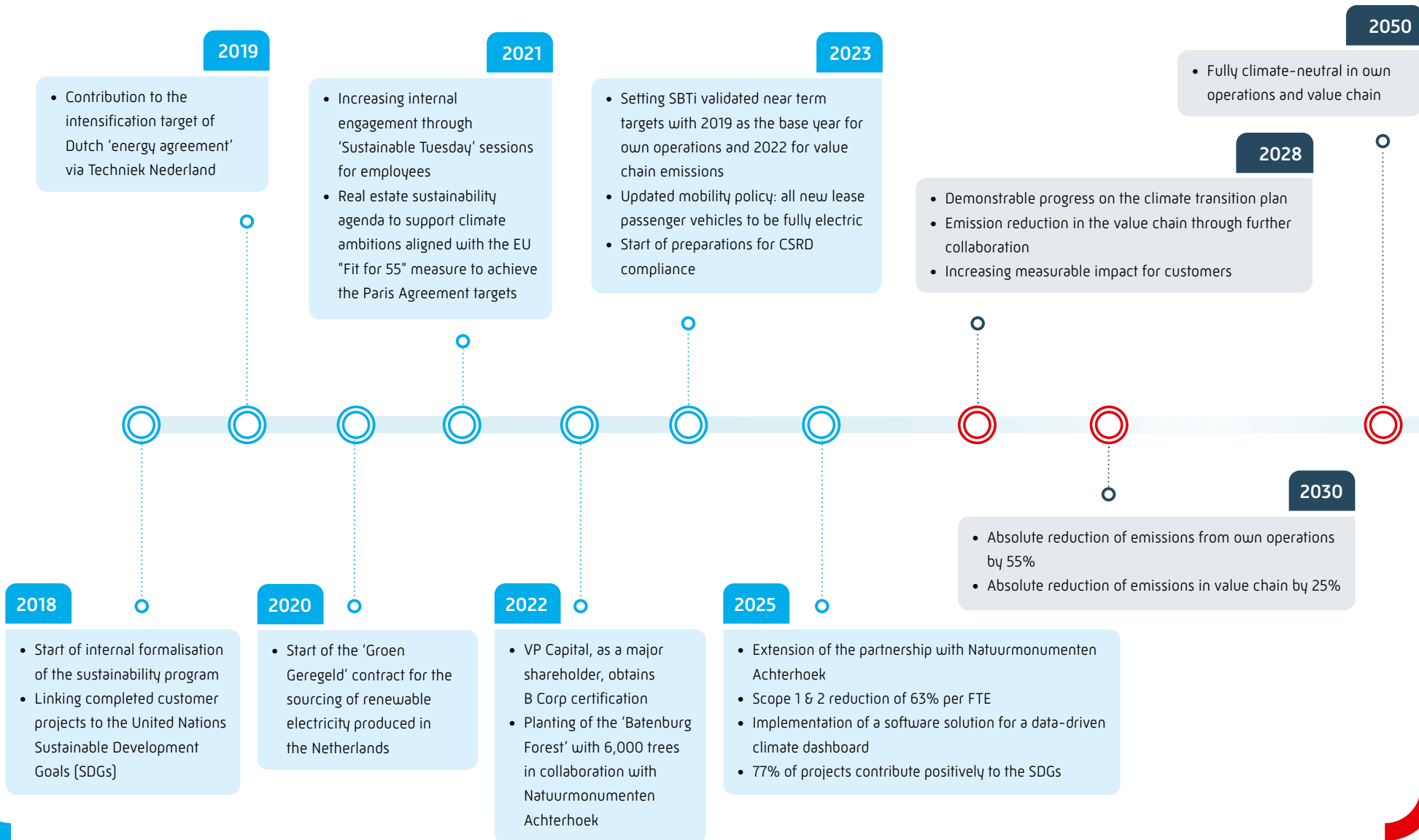
Batenburg Techniek has now existed for more than 100 years. Together with our shareholders, we invest in the continuity of the company and in our colleagues for the next century. The majority of our shares are held by VP Capital, a family office with a mission for positive change and certified as a B Corp. Through mutual collaboration, consideration and our societal role, we jointly strengthen the pursuit of a cleaner, safer and healthier environment.


Governance



Transition path

On our way to a brighter tomorrow





smarter focus.
brighter tomorrow.

Batenburg Techniek

Rotterdam

Batenburg Industrial Automation

Den Haag
Ederveen
Heerenveen
Moerdijk
Nijkerk
Schiedam
Zeist
Zundert
Zwaag
Zwolle
Madrid (Spain)
Schilde (Belgium)

Batenburg Horticulture

Vlaardingen
Alexandria (United States)
Beijing (China)
Vineland Station (Canada)
Querétaro (Mexico)

Batenburg Energy Technology

Capelle aan den IJssel

Batenburg Installation Technology

Nijkerk
Nijmegen
Rotterdam
Schiedam
Twello
Waalwijk

Batenburg Industrial Components

Rotterdam
Veenendaal
Schilde (Belgium)

Stolwijkstraat 33, 3079 DN Rotterdam

The Netherlands

T +31 (0)10 - 292 80 80

E info@batenburg.nl

W batenburg.nl